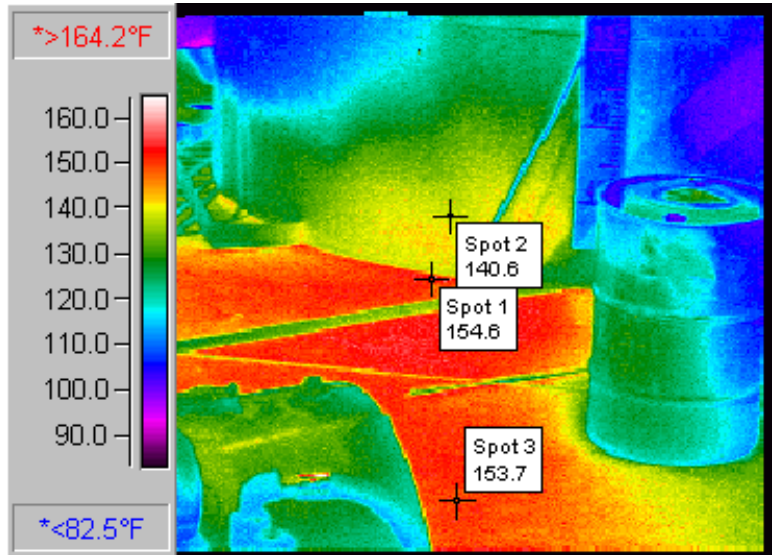


HEATEC BULLETIN

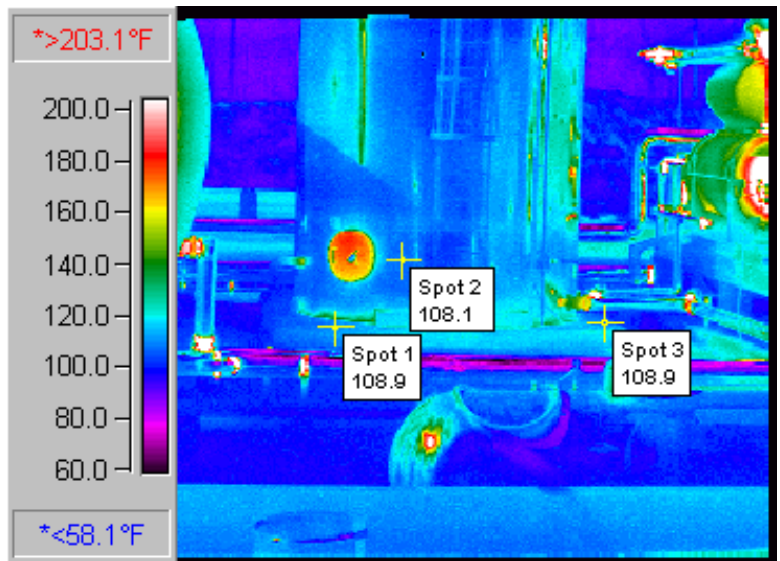
Product news from Heatec Inc., an Astec Company 5200 Wilson Road, Chattanooga, TN 37410 Phones 423-821-5200 800-235-5200 www.Heatec.com



Infrared photo at right reveals high temperatures of the concrete at the base of the vertical tank shown above. The temperatures indicate that the tank is losing a significant amount of heat from its lower bulkhead. This tank is **not** made by Heatec.



The lower bulkhead of the vertical tank shown above is insulated to minimize heat loss. Infrared photo at right shows relatively low temperatures at base of tank. This tank is made by Heatec.



Infrared Camera Reveals Heat Losses

An infrared camera was used to take pictures of heat radiation from the two asphalt storage tanks shown above. Matching conventional photos aid in identification. Both tanks were filled with polymer asphalt cement heated to approximately 350 degrees F. The infrared pictures were quite revealing.

It appears that the bottom of the tank in the upper photos is not insulated. This would account for the high temperatures of the concrete near the tank. The concrete directly beneath

the tank is probably hot enough to boil water. In any case, a lot of heat is being wasted.

The lower photos show a Heatec tank. The infrared image reveals much lower temperatures at its base. We insulate the bottom to reduce heat loss and to save you considerable money over the life of the tank. Others overlook this important detail, which is easily detected by infrared.



HEATEC
An Astec Company